

Invasive Non-Native Species Policy Development

Conferencia Europea - Especies Exoticas Invasoras – 15 &
16 January 2008

Huw Thomas

Head, Protected Species & Non Native Species Team

Content

- Establishing the policy baseline
- Developing key components of a national policy
- Synthesis into a national strategy

Establishing the Policy Baseline

Key policy drivers

- Convention on the Conservation of European Wildlife and Natural Habitats (Bern Convention) – Art 11(2)
- Bern European IAS Strategy
- Ramsar Convention on Wetlands - Resolution VIII.18
- Convention on Biological Diversity (CBD) – Art 8(h); COP V/8, VI/23, VII/13, VIII/27
- European Directives - Birds (art 11) & Habitats (art 22(b))
- EC 2006 Communication on Halting Loss of Biodiversity by 2010
- New EU Invasive Alien Species Framework/Strategy?

UK Approach to IAS

2 Bio-geographical approaches:-

- All-Ireland; and,
- Great Britain (GB)



2001 – IAS Policy Review Group:

- Key GB Government departments
- Nature conservation bodies
- Environmental protection bodies
- Marine interests
- Science and research bodies
- Academic institutions
- Animal welfare interests
- Farming, landowning and land management
- Local government
- Zoos and pet sector bodies
- Forestry and horticultural interests
- Boating, fishing, gardening interests

Subject areas examined:

- Governmental structure
- Risk assessment
- Codes of conduct
- Awareness and education
- Legislation
- Monitoring and surveillance
- Management and control policy
- Stakeholder involvement

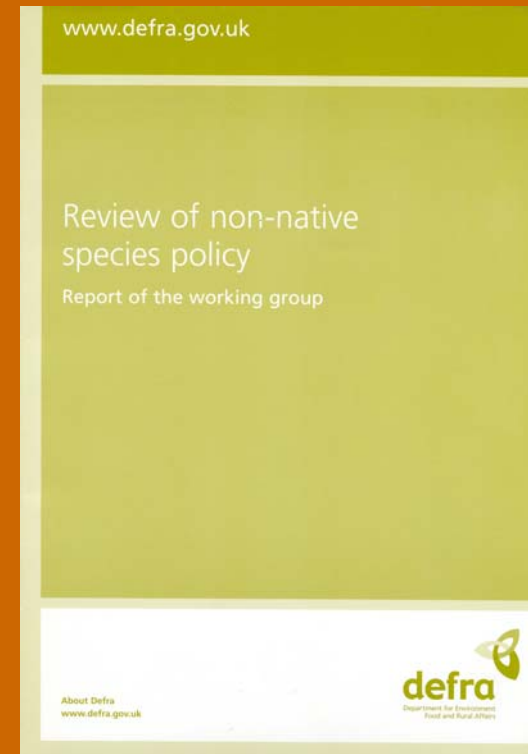
Pathways identified:

	No of pathways for <u>unintentional</u> introductions:	No of pathways for <u>intentional</u> introductions:
Marine	5	3
Freshwater	9	5
Terrestrial	4	10

Policy development 2001 - 2003

2003 - Policy Review Group report:

- 8 key recommendations...
- 41 sub-recommendations
- 3 miscellaneous



Developing key components of a national policy

Policy Review Group report - Key Recommendations:

1. Forum for stakeholder engagement
2. A single lead co-ordinating organisation
3. Comprehensive risk assessment
4. Revise and update existing legislation
5. Establish adequate monitoring and surveillance
6. Develop codes of conduct
7. Develop policies for control of established and new invasive species
8. Targeted education and awareness

Stakeholder Forum:

- A broad body of c.200 interested stakeholders
- Meets annually, usually c.80 – 100 delegates
- 5th meeting in May 2008 – in Wales
- Govt. policy development update, presentations, workshops...

Stakeholder Sounding Board (SSB):

- Improved interaction between the GB Board and key stakeholders on appropriate issues
- SSB - representatives from key stakeholder bodies/sectors – participation is voluntary
- A means to refine proposals and ideas with benefit of key stakeholder input

Policy Review Group report - Key Recommendations:

1. Forum for stakeholder engagement
2. A single lead co-ordinating organisation
3. Comprehensive risk assessment
4. Revise and update existing legislation
5. Establish adequate monitoring and surveillance
6. Develop codes of conduct
7. Develop policies for control of established and new invasive species
8. Targeted education and awareness

GB IAS Programme Board:

- Established in 2005, meets c.4 times a year
- Membership: Policy leads from England, Scotland and Wales, plus other key departments and bodies
- Aim: Leadership and oversight on IAS policy issues, ensuring action is coordinated and effective on strategic objectives and priorities

GB Programme Board – membership includes:

- Biodiversity / IAS Government policy leads
- Marine and freshwater fisheries
- Transport policy
- Plant Health
- Joint statutory nature conservation body
- Government Central Science Laboratory
- Forestry policy
- Statutory environmental protection body – soil, air, water

- GB Programme Board has its own Secretariat
- Board commissioned development of a national strategy

Policy Review Group report - Key Recommendations:

1. Forum for stakeholder engagement
2. A single lead co-ordinating organisation
3. Comprehensive risk assessment
4. Revise and update existing legislation
5. Establish adequate monitoring and surveillance
6. Develop codes of conduct
7. Develop policies for control of established and new invasive species
8. Targeted education and awareness

UK Non-Native Organism Risk Assessment Scheme:

- Government commissioned the development of a generic scheme – the UK Non Native Organism Risk Assessment scheme
- Scheme developed by a consortium of six UK institutes / universities (2004 - 2005)
- Based on the Pest Risk Assessment scheme constructed by the European and Mediterranean Plant Protection Organisation (EPPO, 1997)

How does it work?

- 14 questions to determine whether a full risk assessment is required?
- Set of 51 questions designed to assess:
 - Potential for entry and establishment
 - Capacity for spread
 - Extent to which significant economic, environmental or social impacts may occur

- Risk Assessor chooses level of response (very low, low, medium, high, very high) and rates uncertainty (low, medium and high).

Project generated 6 modules – (modules 1 and 2 are key as the working modules):

- Module 1 – determines whether the species has invasive attributes
- Module 2 – importance of introduction pathways

Other modules are:

- Module 3 – vulnerability of receptors
- Module 4 – quantifies economic impacts
- Module 5 – summarise risk and uncertainty into the low, medium and high categories
- Module 6 – framework for risk management options

- Scheme developed using 33 non-native species from 12 different taxon-habitat combinations during project
- Project generated scheme with 4 risk assessment examples of good practice

Peer review of the scheme:

2006 – Project to trial and peer review the Risk Assessment Scheme:

- Tested on 23 species and 3 pathways by range of organisations - assessors asked to identify the practicalities and problems of using the scheme
- 20 recommendations for further improvement of the scheme made

Further development

- Nov 2007 – Project let for the final development of the Risk Assessment Scheme according to the 2006 peer review project recommendations
- Due to report in August 2008.
- But how will we sign off and finalise Risk Assessments?

Risk Analysis Panel

Panel consists of 5 risk assessment experts with the following broad ecological experience:

- Plants
- Invertebrates
- Fish and Amphibians
- Marine
- Economics
- (Plus higher vertebrates expertise in the Secretariat)

Risk Assessment methodology

	Probability of Entry	RESPONSE	UNCERTAINTY	COMMENT	SUM
1.1	List the pathways that the organism could be carried on. How many relevant pathways can the organism be carried on?	few - 1	LOW - 0	Rhizome contaminants of soil. Relatively few different pathways apart from natural dissemination along rivers and through movement of soil and waste	1

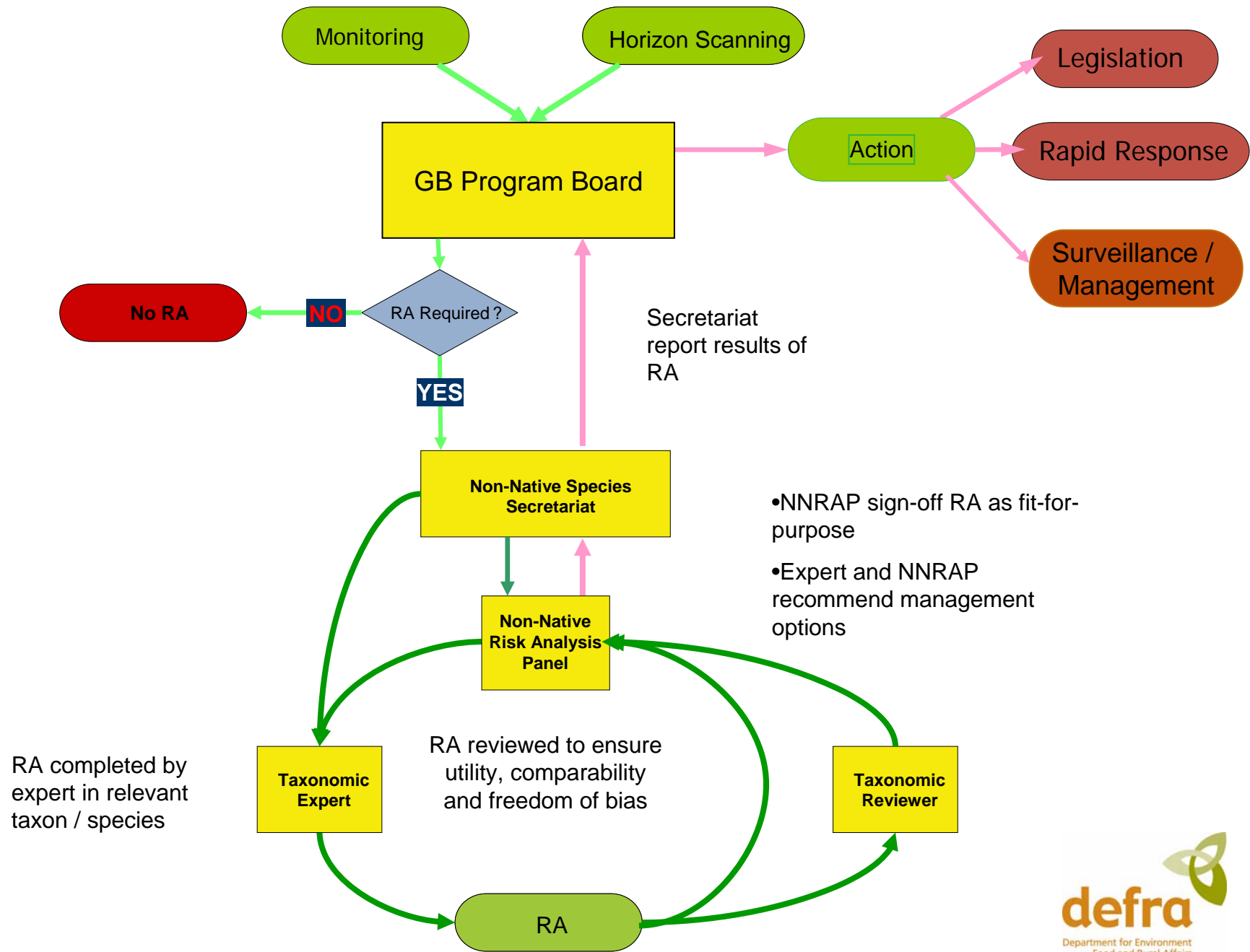
	Probability of Establishment	RESPONSE	UNCERTAINTY	COMMENT
1.15	How similar are the climatic conditions that would affect establishment in the Risk Assessment area and in the area of current distribution?	very similar - 4	LOW - 0	Climate envelope models have identified that Europe has a similar climate to its native range. Altitude range: 0 - 3800 m- Mean annual rainfall: 580 - 2200 mm- Rainfall regime: - Dry season duration: 0 - 0 months- Mean annual temperature: 5 - 17°C- Mean

	Spread	RESPONSE	UNCERTAINTY	COMMENT
2.1	How rapidly is the organism liable to spread in the Risk Assessment area by natural means?	intermediate - 2	LOW - 0	Can spread along river systems quite far and the species has spread substantially since the 1962 Atlas of the British and Irish Flora
2.2	How rapidly is the organism liable to spread in the Risk Assessment area by human assistance?	very rapid - 4	LOW - 0	Human transport of soil
2.3	How difficult would it be to contain the organism within the Risk Assessment area?	very difficult - 4	LOW - 0	Too difficult to detect, rhizome fragments weighing as little as 0.7 g are capable of regenerating into a new plant
2.4	Based on the answers to questions on the potential for establishment and spread define the area endangered by the organism.	UK Lowlands	LOW - 0	Disturbed and waste ground, suburban areas, abandoned buildings and riparian habitats
	Impacts	RESPONSE	UNCERTAINTY	COMMENT
2.5	How important is economic loss caused by the organism within its existing geographic range?	major - 3	MEDIUM - 1	Limited quantitative data from outside the UK but there is no reason to expect that costs would differ from those within the Risk Assessment Area

Summarising Risk

- Overall risk rating provided by three methods:
 - Author's Opinion
 - Score Averaging (Summation)
 - Conditional Probability

Case study	Author	Score Averaging	Conditional probability
Topmouth gudgeon	High	Medium	High
Japanese knotweed	High	High	High
Indian house crow	Medium	Medium	Medium
<i>Metarhizium anisopliae</i>	Low	Medium	Low



Policy Review Group report - Key Recommendations:

1. Forum for stakeholder engagement
2. A single lead co-ordinating organisation
3. Comprehensive risk assessment
4. Revise and update existing legislation
5. Establish adequate monitoring and surveillance
6. Develop codes of conduct
7. Develop policies for control of established and new invasive species
8. Targeted education and awareness

Legislative updates

Recent new legislative powers:

- Power to ban sale of invasive non-native species, (eg. *Rana catesbeiana*, *Trachemys scripta*, *Hydrocotyle ranunculoides*, *Azolla filiculoides*)
- Power to approve Codes of Practice – courts to take them into account in enforcement proceedings
- Further legislative review proposed in national strategy

Policy Review Group report - Key Recommendations:

1. Forum for stakeholder engagement
2. A single lead co-ordinating organisation
3. Comprehensive risk assessment
4. Revise and update existing legislation
5. Establish adequate monitoring and surveillance
6. Develop codes of conduct
7. Develop policies for control of established and new invasive species
8. Targeted education and awareness

Central IAS Data Repository

- National Biodiversity Network – mainly for native species & habitats
- Scoping project on development of central data recording mechanism for IAS - completed
- Identified technical requirements, key data sources, costs etc...
- Under consideration by GB IAS Programme Board

Policy Review Group report - Key Recommendations:

1. Forum for stakeholder engagement
2. A single lead co-ordinating organisation
3. Comprehensive risk assessment
4. Revise and update existing legislation
5. Establish adequate monitoring and surveillance
6. Develop codes of conduct
7. Develop policies for control of established and new invasive species
8. Targeted education and awareness

Codes and Advisory Documents

- Horticultural Code – published
- Japanese Knotweed Code - published
- Companion Animal Code – under development

GB IAS Media & Communications strategy will set future context for use and effective promotion of Codes...

Policy Review Group report - Key Recommendations:

1. Forum for stakeholder engagement
2. A single lead co-ordinating organisation
3. Comprehensive risk assessment
4. Revise and update existing legislation
5. Establish adequate monitoring and surveillance
6. Develop codes of conduct
7. Develop policies for control of established and new invasive species
8. Targeted education and awareness

Range of current control-related work:

- Mink eradication & hedgehog control in Outer Hebrides – bird predation impacts...
- Research into *Ludwigia* – only small populations in GB...
- Bio-control of Japanese knotweed – CABI research – 2 agents identified...
- Japanese knotweed – land remediation tax relief...

Policy Review Group report - Key Recommendations:

1. Forum for stakeholder engagement
2. A single lead co-ordinating organisation
3. Comprehensive risk assessment
4. Revise and update existing legislation
5. Establish adequate monitoring and surveillance
6. Develop codes of conduct
7. Develop policies for control of established and new invasive species
8. Targeted education and awareness

Synthesis into a National Strategy

Why do we need a GB strategy?

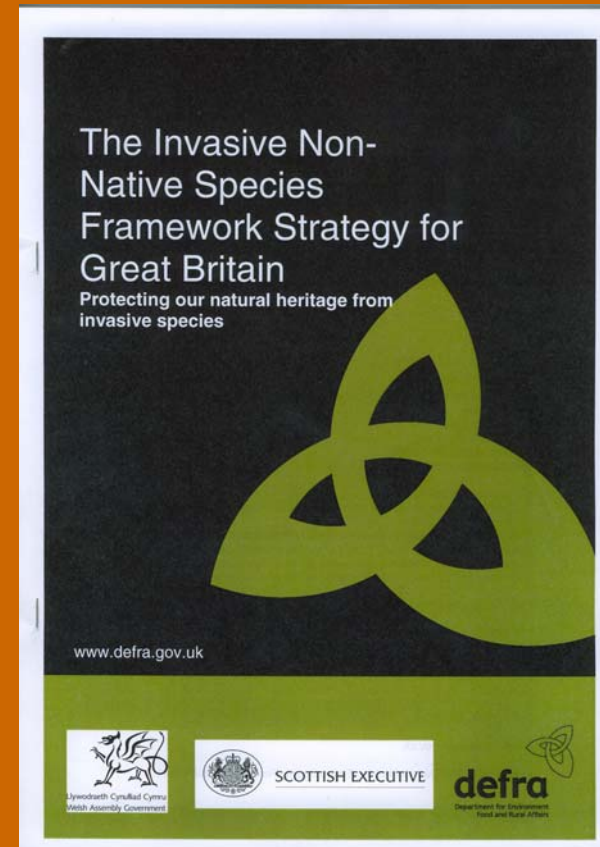
- Issues are cross-cutting and cross-border
- Many organisations have a relevant interest
- Need for a coherent and more co-ordinated approach
- Need for a high level game-plan
- Need to translate international commitments into national action

Draft Strategy - Seven key operational chapters:

- Prevention
- Early detection, surveillance, monitoring and rapid response
- Mitigation, control and eradication
(CBD Guiding Principle 2)
- Building awareness and understanding
- Legislation
- Research
- Information exchange and integration

The draft strategy

- The Invasive Non-native Species Framework Strategy for Great Britain
- 7 prime objectives in 7 key chapters
- 49 related actions or measures
- Consultation February – May 2007



Benefits for local/regional initiatives?

- National Strategy is an “overall strategic framework”
- National context and sense of direction for regional/local initiatives
- Consistent policy approach across key delivery bodies, local government etc
- Successful strategy implementation will need strong stakeholder commitment and partnerships

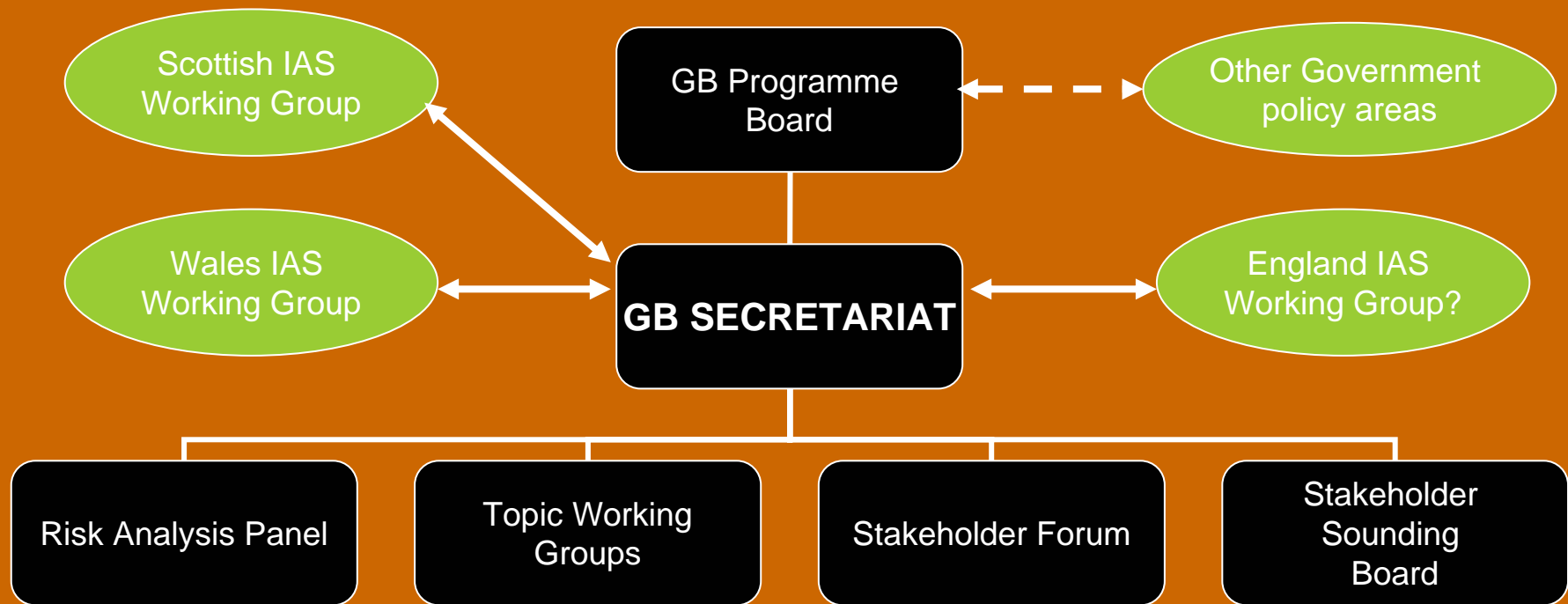
National & Local perspectives

Programme Board will:

- steer action and policy development at national level
- scope national eradication/control/management options & programmes
- influence key bodies and organisations
- guide international interface on IAS etc

Regional/local initiatives will decide their own priorities within this framework

Key GB IAS Mechanism Components



www.nonnativespecies.org

The screenshot shows a web browser window displaying the homepage of www.nonnativespecies.org. The browser's address bar shows the URL. The page has a navigation menu on the left with links to home, Fact File, GB Coordination, Guidance, Policy and strategy, Legislation, Public Consultations, Useful links, and Databases. Below this is a 'Links' section with a list of partner organizations including Defra, Scottish Government, National Assembly for Wales, Natural England, Environment Agency, JNCC, Countryside Council for Wales, and Scottish Natural Heritage. The main content area features a section titled 'Non-native Species' with a sub-header 'Non-native Species' and a paragraph explaining that invasive non-native plant and animal species are a major threat to biodiversity. Below this is a section titled 'Non-native Crayfish alert - Marbled Crayfish' with a photograph of a crayfish and a link to a news release. On the right side, there is a 'Notice Board' with two yellow sticky-note style announcements: one about a consultation on the Wildlife and Countryside Act 1981 and another about the eradication of Ruddy Ducks to protect White-headed Ducks. The browser's status bar at the bottom shows 'Done' and 'Internet'.

You are here: home > non native species

home >

- Fact File
- GB Coordination
- Guidance
- Policy and strategy
- Legislation
- Public Consultations >
- Useful links
- Databases

Links

- Defra
- Scottish Government
- National Assembly for Wales
- Natural England
- Environment Agency
- JNCC
- Countryside Council for Wales
- Scottish Natural Heritage

Non-native Species


Invasive non-native plant and animal species are the second greatest threat to biodiversity worldwide (after habitat destruction). They can negatively impact on native species, can transform habitats and threaten whole ecosystems causing serious problems to the environment and the economy.

This website is dedicated to providing information about non-native species issues in Great Britain. You can find information on a range of individual species, contact details for relevant organisations and information on research and management. We also detail legislation and guidance and a list of other useful websites. Use the links on the left to find out more.

Government recognises the significance of the problems caused by invasive non-native species and, in response, has set up the Great Britain Non-native Species Mechanism. Select GB Co-ordination on the left hand side of the screen to find out more.

Non-native Crayfish alert - *Marbled Crayfish*

Have you seen a crayfish that looks like this?



For more information, or if you have seen one, in **captivity** or the wild, jump to the cefas news release [here](#)

Notice Board

Defra and the Welsh Assembly launch consultation on the review of schedule 9 of the Wildlife and Countryside Act 1981.

The schedule lists non-native species that are already established in the wild, but which continue to pose a conservation threat to native biodiversity and habitats, such that further releases should be regulated. The consultation also includes proposals to ban the sale of certain non-native species.

The consultation will close on 31 January 2008 - [Click here for details](#)

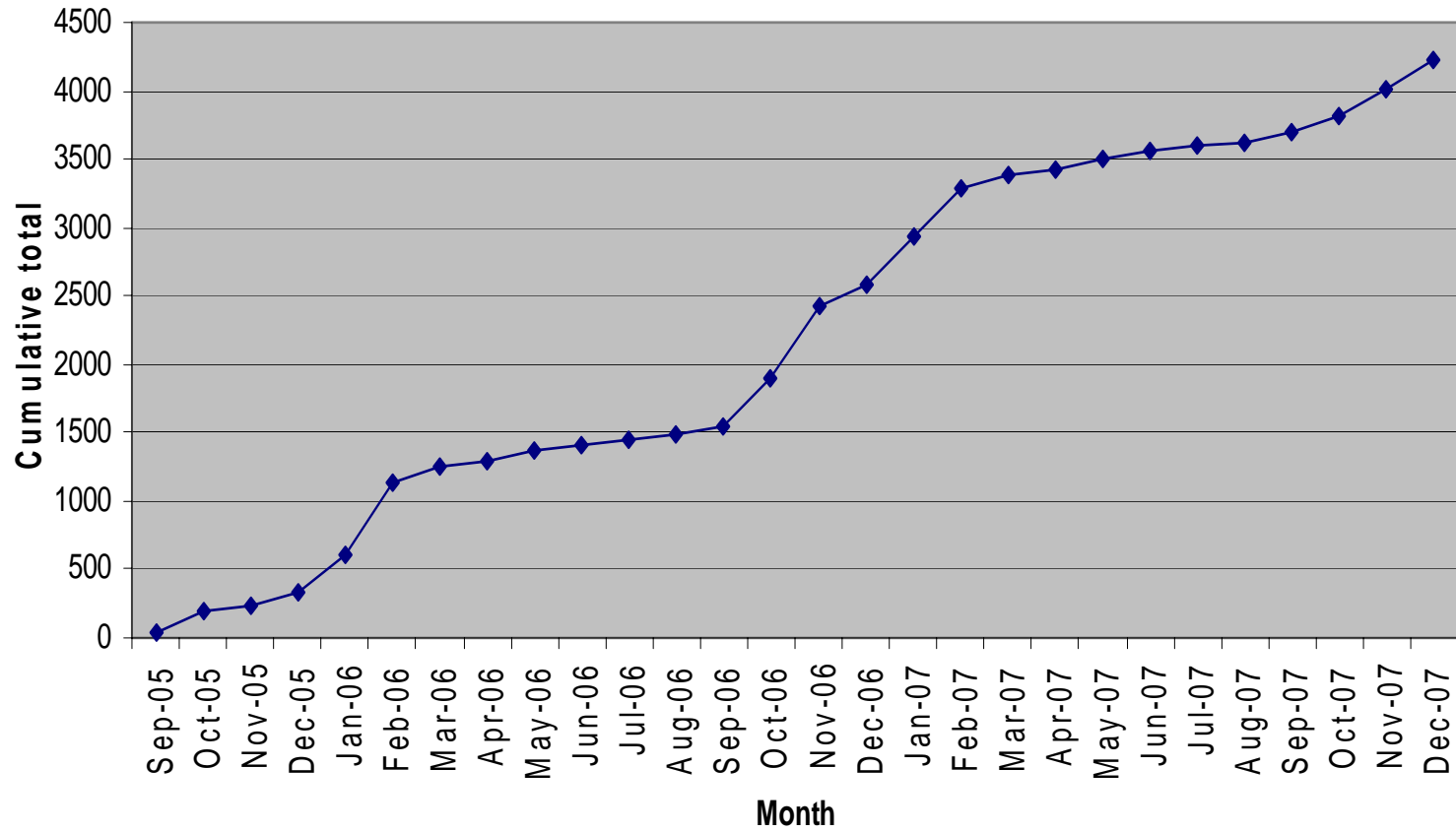
Eradication of Ruddy Ducks in the UK to protect the White-headed Duck



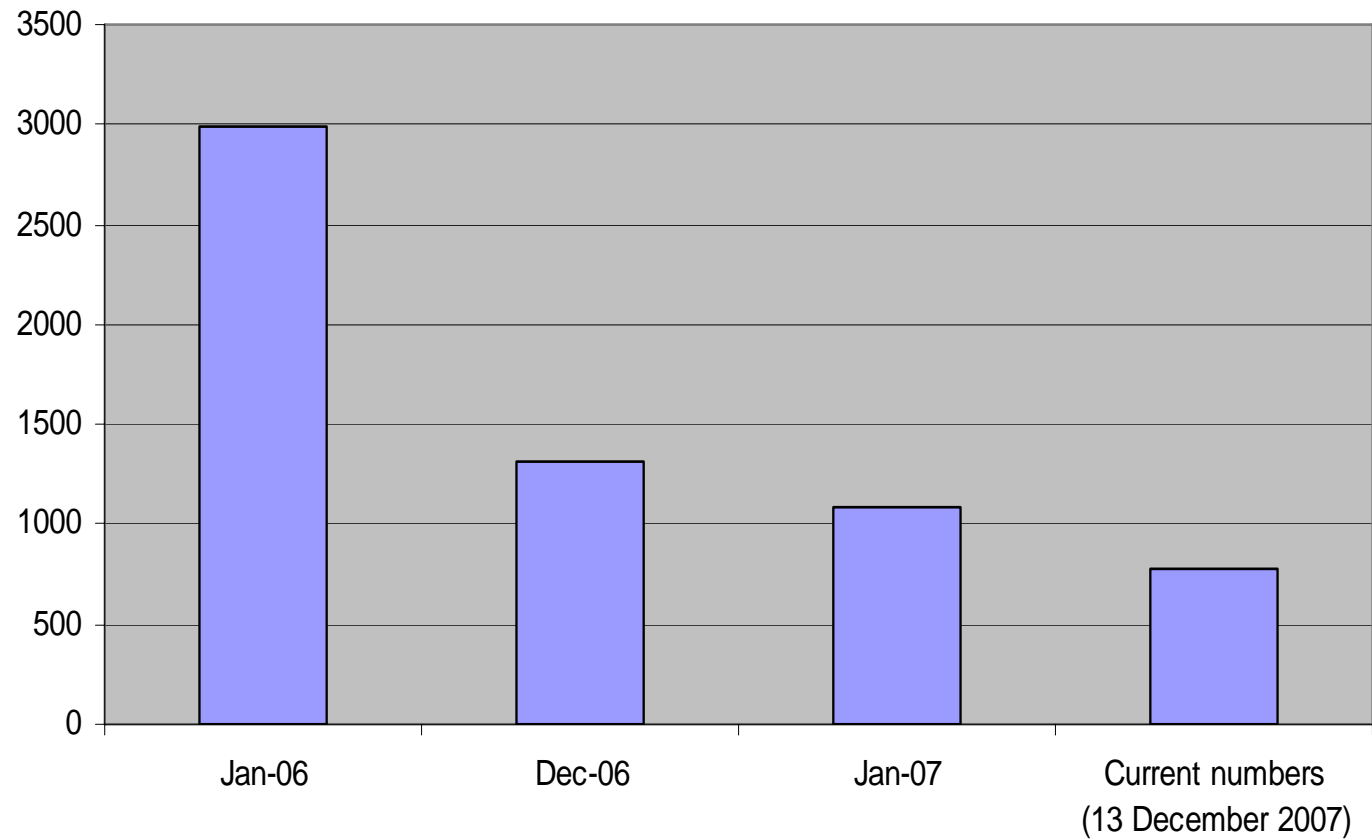
UK Ruddy duck eradication programme

- £3.3M UK Ruddy duck eradication programme – benefits European white headed duck...

Ruddy Ducks shot as part of UK Eradication Programme



Ruddy Duck numbers on 40 key UK wintering sites



Thank you.